

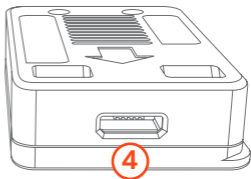
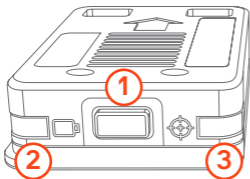
smart beacon Operation

V1.0



EN

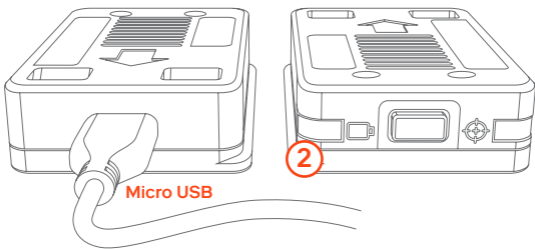
Device Overview



- 1 Multi-Function button**
2 **second** hold to power on and initiate calibration
<1 **second** press for status check (indicated via LED colour)
5 **second** hold to power down
- 2 Battery Charge LED**
Indicates charging status when charging via USB
Indicates battery level during operation via status check
- 3 Status LED**
Indicates device status: calibrating, calibrated, calibration error, armed, beaconing or powering down
- 4 USB Port**
Used for charging via USB Micro B cable (supplied separately).

Charging

The device has a 110mAh battery and charging via USB should take between 60-90 minutes.



Charging progress is indicated by the Charging state LED:

- ② ● 5sec Charging - trickle Charge
- Charging - 0-49% charged
- Charging - 50-99%
- 2sec charged Charging - 100%

When the USB cable is disconnected, both LEDs will briefly flash Red to indicate the device is powering down.

If the full charged device has not been used for 15 days, it is advisable to recharge to 100% before using.

Battery Charge LED When Disconnected

Briefly press the button for less than 1 second for Status Check.

- ② ● At least 8 days of charge remaining
- 4-7 days of charge remaining
- 1-3 days of charge remaining
- 2sec Less than 1 day of charge remaining

Operation - Arming

Arming

- 1) Mount the device on the holster as per the guidelines specific to the holster and weapon being used.
- 2) Ensure the weapon is holstered.
- 3) Hold the button for 2 seconds to power on and initiate the calibration cycle.

Calibration is indicated by flashing pink Status LED and lasts for 15 seconds.

During the calibration cycle:

- Keep the weapon holstered for the first 5 seconds
- Unholster the weapon for about 5 seconds
- Return the weapon to holster for the final 5 seconds

The completion of the calibration cycle is confirmed via Solid Pink Status LED.

Armed status is then confirmed by Solid Blue Status LED for 10 seconds.

A fully charged device can be expected to last for at least 15 days when in the armed state. The battery charge can be checked with a single short press of the button:

Status Check (Armed)

Briefly press the button for less than 1 second for Status Check.

- Armed state confirmed by Solid Blue Status LED.
- Battery status is also indicated via Battery Charge LED.

Calibration Failure

Calibration failure is reported by flashing red and white LEDs.

Calibration may fail due to:

- Insufficient signal to differentiate between holster/unholstered states.
- The weapon was not holstered at the end of the 15 seconds.

If calibration fails the device will power down and the calibration process must be restarted.

NOTE: Calibration can be aborted by holding the power button for 5 seconds.

Operation – Beaconsing/Reset

Beaconsing

Remove the weapon from holster.

The device will automatically start beaconsing and any cameras within range* will start recording.

* Camera sensitivity can be configured via DEMS 360.

The device will continue to beacon until:

- The weapon is re-holstered.
- The device is manually powered down.
- 60 minutes elapses (at which point the device power down).

Status Check (Beaconsing)

Briefly press the button for less than 1 second for Status Check.

- Beaconsing state confirmed by flashing Blue Status LED.
- Battery status is also indicated via Battery Charge LED.

Re-holstering

When the weapon is re-holstered, Armed status will resume.

Armed status can be verified using the Status Check.

If the weapon is removed the device will start beaconsing again.

Power down/Reset

NOTE: The device can be powered down when calibrating, armed or beaconsing.

Hold power button for 5 seconds.

- Initially the LEDs will indicate the current status, then, both will flash white six times.
- Continue to hold down the button until both LEDs flash red, indicating the device is powering down.
- Release the button.

NOTE: Stop the device from beaconsing before attempting to stop the camera recording.

Battery Safety and Storage

Battery safety

Reveal's Smart Beacons use lithium Ion batteries which are common in most portable devices such as radios and mobile phones. Reveal's Smart Beacons are safety tested with the appropriate certification.

Damage to a lithium Ion battery can cause excessive heat build-up often associated by an audible "hissing" sound, smoke and, in extreme cases, combustion. The Smart Beacons casing provides a degree of battery protection, however, if the case becomes punctured or crushed by excessive forces, then there is a risk of battery damage. Therefore, we recommend that the user of Smart Beacons performs a risk assessment as to the role of the wearer and likelihood of excessive trauma to the device.

If a Smart Beacon becomes excessively hot or emits any unusual sounds or smoke then:

- Immediately detach the device and place in a safe area.
- Do not charge the device.
- Contact Reveal Support.

Storage

Store in dry place, away from direct sunlight and sources of heat, at a temperature between -20°C and 45°C (-4°F to 113°F).

Lithium ion battery discharge naturally over extended periods of time and if not charged for prolonged periods of time, may deteriorate resulting in reduced performance and failure.

If your Smart Beacon is kept in long-term storage it should be charged to at least 50% of full charge every month. Your warranty may be invalidated if you fail to recharge your battery regularly or to follow other instructions for the storage, installation, commissioning, use or maintenance of the device.