

CALLA

docking station Operation

V1.0



EN

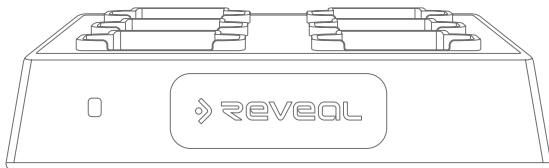
Introduction

The Calla docking station is the multiple camera docking option designed for the Calla camera. Up to six cameras can be docked and connected to your DEMS 360 account host computer using fast USB 3.0 connectivity.

Please use the USB 3 cable supplied to maximise the data transfer speed when uploading footage via the dock and host PC USB 2 or USB 3 ports.

CAUTION: The Calla docking station MUST BE USED WITH THE POWER ADAPTER SUPPLIED.

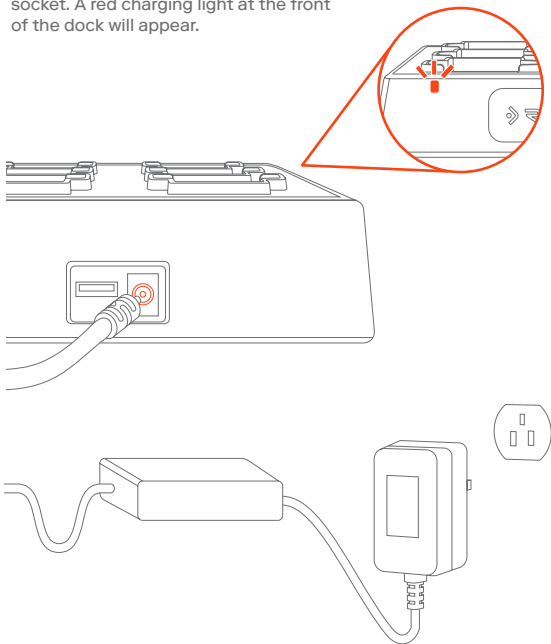
NOTE: where possible, it is highly recommended for the power adapter to be rested level with docking station unit. This is to avoid any unnecessary tension on the adapter plug which might cause it to detach from the docking station.



Setting Up

Step 1 - Power:

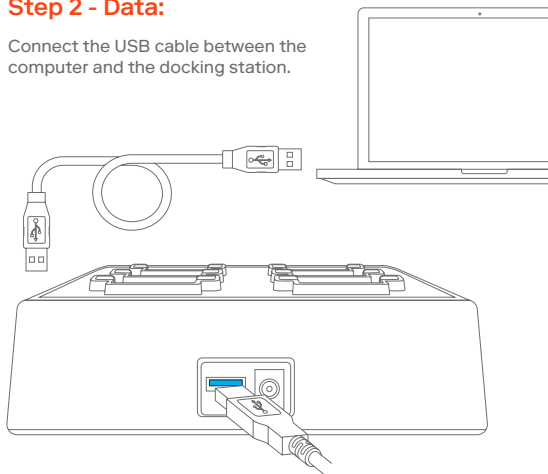
Connect the power adapter between the docking station and the mains socket. A red charging light at the front of the dock will appear.



Setting Up

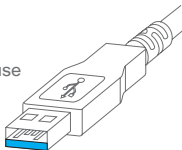
Step 2 - Data:

Connect the USB cable between the computer and the docking station.



Either end of the USB cable can be connected to the docking station or the PC.

The blue insert in the connector signifies it is a USB 3 cable. Please use this cable to maximise data transfer speed when uploading footage.



Setting Up

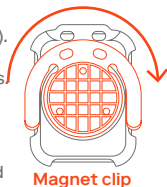
Step 2:

Insert the camera (without removing the case). If using the camera's magnet clip, it must be rotated so the fingers are pointing downwards.

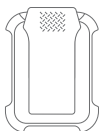
Once docked, the camera will begin charging and enter into mass storage mode.

Ensure cameras are not inserted and removed at an angle as doing so has the potential to damage the USB port.

Do not leave cameras partially disconnected, sitting in the dock at any angle as this also has the potential to damage the USB port.



Magnet Mount



Shirt Clip

LED Light Status

- Charging
- Fully Charged

